

TNO-6322ER

2MP Explosion-proof Camera

Network



FC|CE|EAC

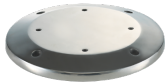
Key Features

- Max. 2MP (1920 x 1080) resolution
- H: 61.8(Wide)~2.19(Tele) / V: 36.2(Wide)~1.24(Tele) Field of View
- Max. 60fps/50fps (60Hz/50Hz)
- H.265, H.264, MJPEG codec, WiseStream II
- IR viewable length 70m
- Day & Night (Auto ICR), WDR (120dB)
- Explosion-proof certificate: IECEX, ATEX, KCs
- Stainless 316L, Built-in wiper
- IP67, IK10

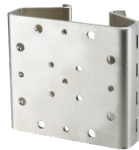
Compatible Accessories (Optional)



SBE-100WM



SBE-100B



SBE-100PM

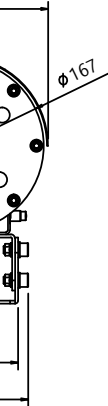
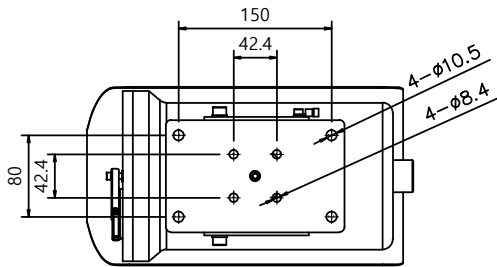
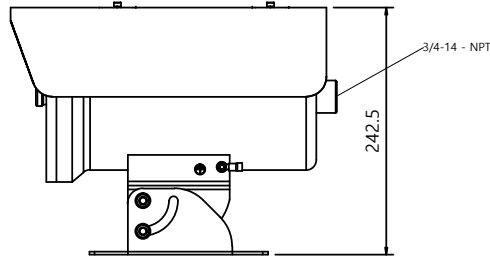
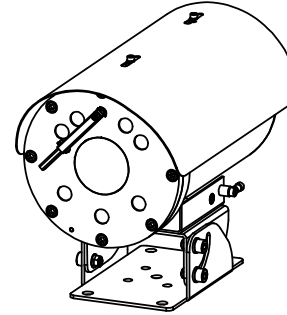
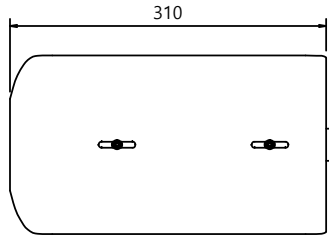
Video	
Imaging Device	1/2.8" CMOS
Resolution	1920x1080, 1280x1024, 1280x960, 1280x720, 1024x768, 800x600, 800x448, 720x576, 720x480, 640x480, 640x360, 320x240
Max. Framerate	H.265/H.264: Max. 60fps/50fps(60Hz/50Hz) MJPEG: Max. 30fps/25fps(60Hz/50Hz)
Min. Illumination	Color: 0.05Lux (1/30sec, F1.6) B/W: 0.005 Lux (1/30sec, F1.6), 0Lux(IR LED on)
Lens	
Focal Length (Zoom Ratio)	4.44 ~ 142.6mm(32X) zoom
Max. Aperture Ratio	F1.6(Wide)~F4.4(Tele)
Angular Field of View	H: 61.8(Wide)~2.19(Tele) / V: 36.2(Wide)~1.24(Tele)
Min. Object Distance	Wide 1.5m, Tele 2m
Focus Control	One shot AF
Lens Type	DC auto iris
Operational	
Camera Title	Displayed up to 85 characters
Day & Night	Auto(ICR)
Backlight Compensation	BLC, HLC, WDR, SSSDR
Wide Dynamic Range	120dB
Digital Noise Reduction	SSNR V
Digital Image Stabilization	Support
Defog	Support
Motion Detection	8ea, 8point polygonal zones
Gain Control	Low / Middle / High
White Balance	ATW / AWC / Manual / Indoor / Outdoor
Electronic Shutter Speed	Minimum / Maximum / Anti flicker (1~1/12,000sec)
Analytics	Defocus detection, Directional detection, Fog detection, Face detection, Motion detection, Appear/Disappear, Enter/Exit, Loitering, Tampering, Virtual line, Audio detection
Alarm I/O	Input 1ea / Output 1ea
Alarm Triggers	Analytics, Network disconnect, Alarm input
Alarm Events	File upload via FTP and e-mail Notification via e-mail NAS recording at event triggers Alarm output Zoom Preset
Audio In	Selectable(mic in/line in) Supply voltage: 2.5VDC(4mA), Input impedance: 2K Ohm
Audio Out	Line out, Max.output level: 1Vrms
IR Viewable Length	70m (229.66ft)
Water Removal	Support (with Wiper)
Network	

Ethernet	RJ-45 (10/100BASE-T)
Video Compression	H.265/H.264: Main/Baseline/High, MJPEG
Audio Compression	G.711 u-law /G.726 Selectable G.726(ADPCM) 8KHz, G.711 8KHz G.726: 16Kbps, 24Kbps, 32Kbps, 40Kbps AAC-LC: 48Kbps at 16KHz
Smart Codec	Manual(5ea area), WiseStream II
Bitrate Control	H.264/H.265: CBR or VBR MJPEG: VBR
Streaming	Unicast(20 users) / Multicast Multiple streaming(Up to 10 profiles)
Protocol	IPv4, IPv6, TCP/IP, UDP/IP, RTP(UDP), RTP(TCP), RTCP,RTSP, NTP, HTTP, HTTPS, SSL/TLS, DHCP, FTP, SMTP, ICMP, IGMP, SNMPv1/v2c/v3(MIB-2), ARP, DNS, DDNS, QoS, PIM-SM, UPnP, Bonjour
Security	HTTPS(SSL) login authentication Digest login authentication IP address filtering User access log 802.1X authentication(EAP-TLS, EAP-LEAP)
Application Programming Interface	ONVIF Profile S/G/T SUNAPI(HTTP API) Wisenet open platform
General	
Webpage Language	English, Korean, Chinese, French, Italian, Spanish, German, Japanese, Russian, Swedish, Portuguese, Czech, Polish, Turkish, Dutch, Hungarian, Greek
Memory	1024MB RAM, 256MB Flash
Environmental & Electrical	
Operating Temperature / Humidity	IR Off : -40°C~+60°C(-40°F ~ +140°F) / Less than 95% RH IR On : -40°C~+55°C(-40°F ~ +131°F) / Less than 95% RH
Storage Temperature / Humidity	-30°C~+60°C(-22°F ~ +140°F) / Less than 95% RH
Certification	IECEX, ATEX, KCs, KC, CE IP67, IK10
Input Voltage	24VAC
Power Consumption	24VAC: Max 45W
Mechanical	
Color / Material	Metalic Silver / Stainless 316L
Product Dimensions / Weight	175(W)x242.5(H)x320(D)mm(6.89x9.59x12.59") / 11.5kg(25.35lb)

- The latest product information / specification can be found at hanwha-security.com
- Design and specifications are subject to change without notice.
- Wisenet is the proprietary brand of Hanwha Techwin, formerly known as Samsung Techwin.

NCE

NO	DESCRIPTION	DISIGN	DATE
⚠			
⚠			
⚠			
⚠			
⚠			
⚠			



ITEM	PART NO.	DESCRIPTION	QTY	REMARKS
			1	

Surface Roughness(Ra), ISO 468

$\sqrt{}$ = $\sqrt{}$, S, S
 $\sqrt{}$ = 25 $\sqrt{}$, 100S, ∇ , N11
 $\sqrt{}$ = 63 $\sqrt{}$, 25S, ∇ , N9
 $\sqrt{}$ = 16 $\sqrt{}$, 6.3S, ∇ , N7

GENERAL TOLERANCE/			
CL.A	(A)	B	C
DIM.			
1 - 4	±0.05	±0.10	±0.25
4 - 16	±0.07	±0.20	±0.35
16 - 63	±0.10	±0.30	±0.50
63 - 250	±0.18	±0.55	±0.90
250 - 500	±0.30	±0.90	±1.50
500 - 1000	±0.50	±1.50	±2.50

FILE NAME			MATERIAL/材质		FINISH		DRW.NO/图号	
			Stainless 316L					
SCALE	UNIT	TOLERANCE	DESIGN	CHECK	APPROVE	DESCRIPTION		
1.000	MM		HY. WOO			외관도 描述		
DATE	2020.10.13				/	/	MODEL NO./型号	TNO-6322ER
KEVIS KEVIS ELECTRONICS INC.						SIZE	A0	
							SHEET 1 OF 1	