



# SPI-BWN0

BCR Camera LED module

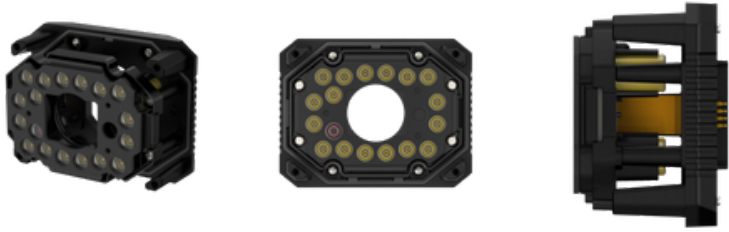


## Key Features

- White LED Module for 3M BCR Camera, available with 16mm/25mm lens
- Power Consumption: 6.9 W
- LED Color: White
- LED Quantity: 16EA
- IP66/IP67(camera and front cover must be assembled)
- Operating Temperature / Humidity: -40°C~+55°C / 0~95% RH
- Supported products: TNS-7000M

# SPI-BWN0

BCR Camera LED module



## Specifications

### Environmental

|                                  |  |
|----------------------------------|--|
| Operating Temperature / Humidity | -40°C~+55°C / 0~95% RH   |
| Storage Temperature / Humidity   | -40°C ~ +60°C / Less than 95% RH   |
| Certification                    | FCC, UL, CE, KC, IEC 62471 IP66/IP67(camera and front cover must be assembled) |

### Electrical

|                   |                  |
|-------------------|------------------|
| Input Voltage     | 24 VDC $\pm$ 10% |
| Power Consumption | 6.9 W            |

### Mechanical

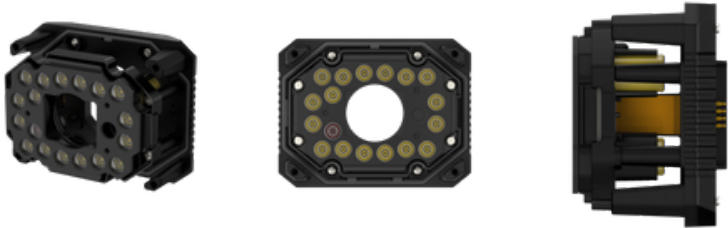
|                             |                                     |
|-----------------------------|-------------------------------------|
| Product dimensions / weight | W101.2mm x D53.8mm x H78.2mm / 200g |
| Supported products          | TNS-7000M                           |

### LED

|                   |                       |
|-------------------|-----------------------|
| Color Temperature | 6,500 K $\pm$ 10%     |
| Quantity          | 16EA                  |
| Angle             | FWHM : 12° 10~% : 32° |

# SPI-BWN0

BCR Camera LED module



CAD

Unit: mm [inch]

