

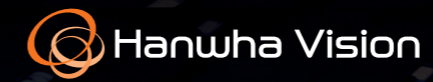
HEAD OFFICE

6, Pangyo-ro 319beon-gil, Bundang-gu, Seongnam-si,
Gyeonggi-do, 13488 South KOREA Tel: 1588-5772
For more information, please visit our website hanwhavision.com

Global Networks

Hanwha Vision America
Hanwha Vision Europe
Hanwha Vision MEA FZE
Hanwha Vision Oceania
Hanwha Vision Singapore Branch
Hanwha Vision Hanoi / Ho Chi Minh Office

Scan this QR code to see
details of global network



X Series AI PTZ Plus



XNP-C6403/C6403R/C6403RW
XNP-C8253/C8253R/C8303RW
XNP-C9253/C9253R/C9303RW

- Enhanced operational efficiency with AI
- Upgraded object auto tracking performance
- AI based enhanced image quality
 - WiseNR II, Prefer shutter control, WiseStream III
- Image quality for night vision (IR 200m)
- Easy installation

© 2023 Hanwha Vision Co., Ltd. All rights reserved.

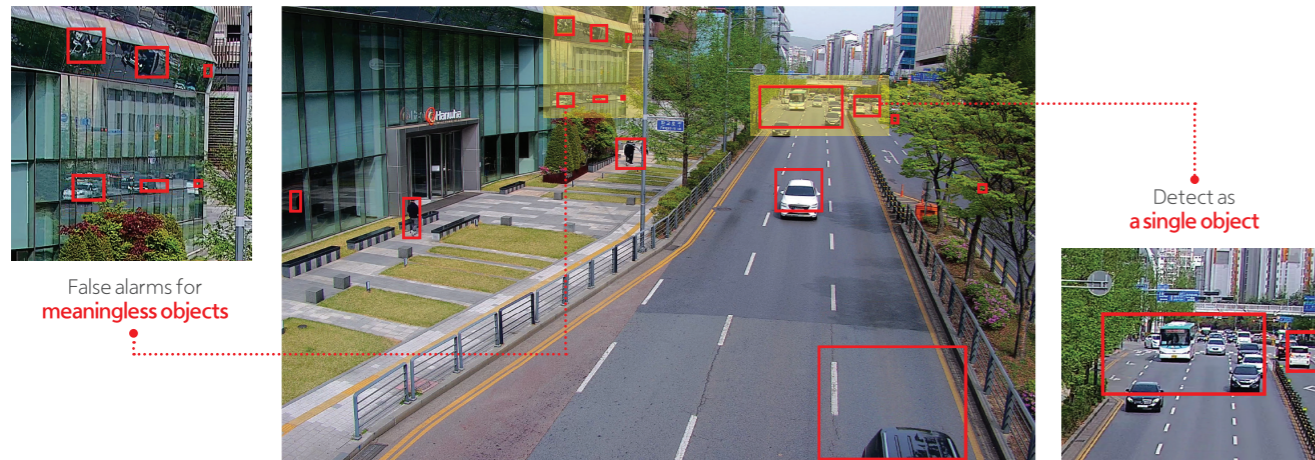
DESIGN AND SPECIFICATIONS ARE SUBJECT TO CHANGE WITHOUT NOTICE
Under no circumstances, this document shall be reproduced, distributed or changed,
partially or wholly, without formal authorization of Hanwha Vision Co., Ltd.
* Wisenet is the proprietary brand of Hanwha Vision, formerly known as Samsung Techwin.

REVISED 06-2023(M.H)

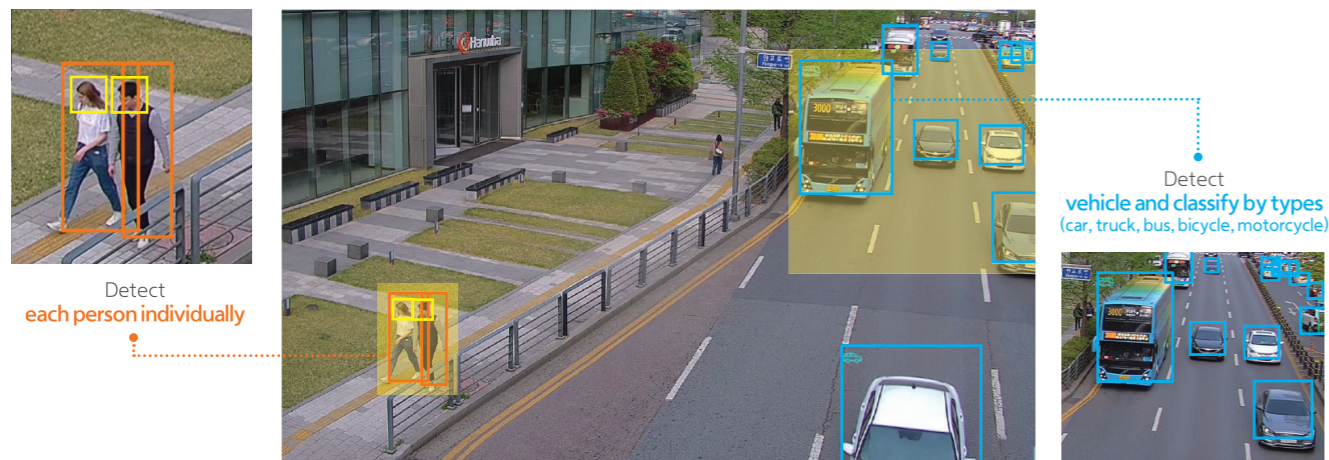
HanwhaVision.com

Enhanced operational efficiency with AI

With the integration of AI, real-time detection and classification of people, vehicles and face, license plate are now possible. X Series AI PTZ Plus can exclude moving trees, shadows, light, and animals that are meaningless in video monitoring, maximizing operational efficiency by minimizing unnecessary alarms when monitoring multiple objects. As could be seen from the image below, motion detection based non AI cameras detect multiple objects as a single movement or detect motion reflected in the exterior of a building, whereas X Series AI PTZ Plus detects people and vehicle in real time, while also distinguishing according to the type of vehicle.



Motion detection based alarms



AI based people and vehicles detection

Upgraded object auto tracking performance

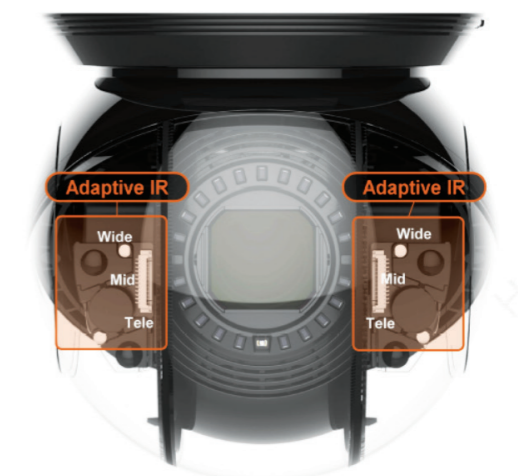
One notable feature of X Series AI PTZ Plus camera is its auto-tracking functionality driven by the upgraded AI engine. With the ability to distinguish between individuals and vehicles, the camera automatically locks onto desired targets and tracks even the small objects in challenging scenarios characterized by low-light and complex nocturnal settings. Furthermore, a missing object redirection capability swiftly recovers temporarily lost targets, allowing uninterrupted tracking despite unforeseen disruptions.



Effectively tracking object of interest only

Improved image quality for night vision

X Series AI PTZ Plus provide the best IR performance with adaptive IR application. With IR light intensity angle for zoom magnification, the X Series AI PTZ Plus can support the night visibility up to 200m (656ft).



Easy installation

The X Series AI PTZ Plus lineup is designed with a focus on simplicity and durability. With a single RJ45 terminal, cable connection becomes effortless and swift. Additionally, the inclusion of a flexible cable bush eliminates the need for additional waterproofing work, effectively preventing water ingress and ensuring enhanced protection.



Enhanced PTZ function

The X Series AI PTZ Plus lineup supports precise PTZ control, enabling object tracking with high precision. Unlike conventional PTZ cameras, which only support preset based fast moving object tracking, the X Series AI PTZ Plus allows detailed panning and tilting tuning based on the movement, enabling manual tracking of the desired object without missing it. X Series AI PTZ Plus also supports tilt angle of 110° (-20° ~ 90°) for efficient monitoring of objects higher than the camera or in inclined environments.



XNP-C6403RW/C8303RW/C9303RW

Resolution	2M / 6M / 4K
Lens	2MP : 4.25~170mm (x40) , 6MP / 4K : 5~150mm (x30)
Wide Dynamic Range	2MP : extremeWDR 150dB , 6MP / 4K : 120dB
IR distance	200m
Analytics	Improve image quality based on AI (WiseStreamIII, WiseNRII, prefer shutter control), Object detection and classification based on AI (Person, Face, Vehicle(Car/Bus/Truck/Motorcycle/Bicycle), License Plate)
I/O	Configurable Alarm I/O, Audio I/O with SPM-4210
Power Consumption	HPoE (PoE Injector included in package)
Water Removal	Wiper, Heater
Certification	IP66, IK10
Security	TPM (FIPS 140-2)



XNP-C6403R/C8253R/C9253R

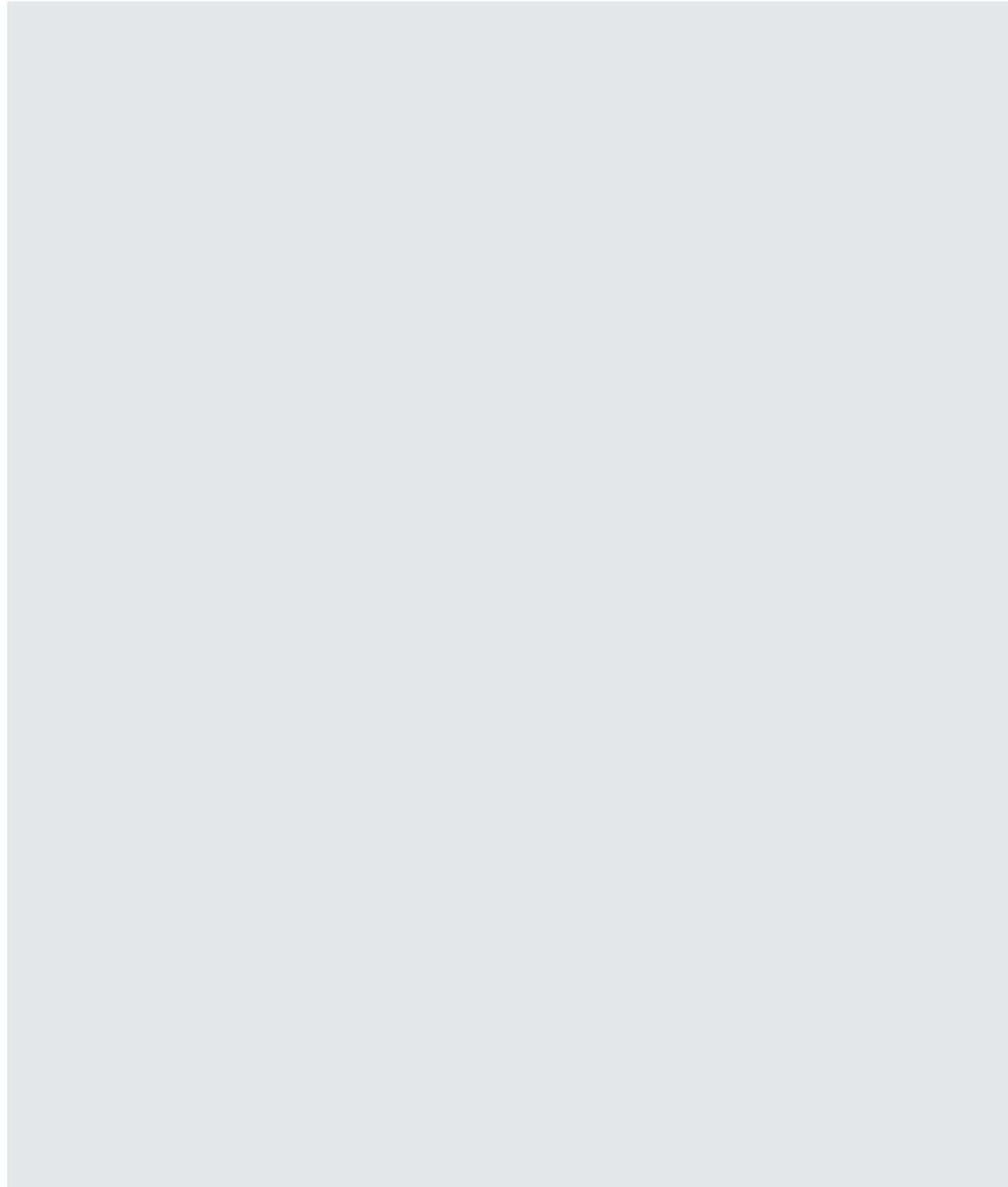
Resolution	2M / 6M / 4K
Lens	2MP : 4.25~170mm (x40) , 6MP / 4K : 5~125mm (x25)
Wide Dynamic Range	2MP : extremeWDR 150dB , 6MP/4K : 120dB
IR distance	200m
Analytics	Improve image quality based on AI (WiseStreamIII, WiseNRII, prefer shutter control), Object detection and classification based on AI (Person, Face, Vehicle(Car/Bus/Truck/Motorcycle/Bicycle), License Plate)
I/O	Configurable Alarm I/O, Audio I/O with SPM-4210
Power Consumption	HPoE (PoE Injector included in package)
Water Removal	Spin Dry, Heater
Certification	IP66, IK10
Security	TPM (FIPS 140-2)



XNP-C6400/C8253/C9253

Resolution	2M / 6M / 4K
Lens	2MP : 4.25~170mm (x40) , 6MP / 4K : 5~125mm (x25)
Wide Dynamic Range	2MP : extremeWDR 150dB , 6MP/4K : 120dB
IR distance	-
Analytics	Improve image quality based on AI (WiseStreamIII, WiseNRII, prefer shutter control), Object detection and classification based on AI (Person, Face, Vehicle(Car/Bus/Truck/Motorcycle/Bicycle), License Plate)
I/O	Configurable Alarm I/O, Audio I/O with SPM-4210
Power Consumption	PoE+ (PoE Injector not included)
Water Removal	Spin Dry, Heater
Certification	IP66, IK10
Security	TPM (FIPS 140-2)

Memo



Memo

