

# DIGIFORT FACE

# BLURRING



# The introduction of GDPR has underlined that privacy matters.

Digifort's Redactor blurs people, faces, vehicles, and license plates in videos automatically and enables human editing of any other identifiable information.



## Automated Redaction

Digifort Redactor blurs people, faces, vehicles, and license plates in videos automatically with a single click. Additionally, allows human editing of any other identifiable information.



## Redaction Type

Beyond standard pixelation and blur, Digifort Redactor detects objects and provides ability to "Outline", "Fill", "Mosaic", "Blur", or "Pixelate" any detection.



## Multiple Detection Types

Advance computer vision built in. More than just faces; Detect people, vehicles, and license plates to automatically redact or box with minimal effort.



## Audio Redaction

Redact audio with a simple intuitive audio waveform. Allowing "mute" or "beep" of sensitive audio information.



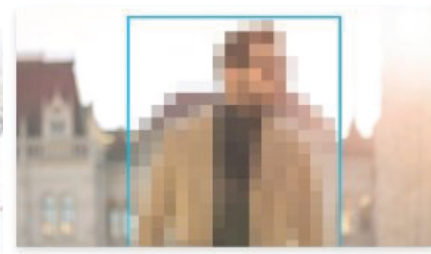
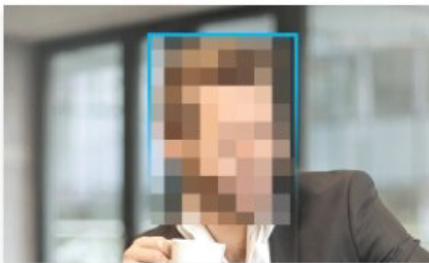
## Small Object Detection

Small object detection is very difficult, but Digifort Redactor is powered by the Sighthound IO platform. The most robust computer vision platform on the market.



## Manual Detection with Tracking

Detect and follow an object throughout the video as it enters or leaves the frame. Greatly minimizing the margin of error often created by manual detection.



## Redactor 3.0 features:

- △ Face Redaction
- △ Audio Redaction
- △ Manual Redaction
- △ Person Redaction
- △ Vehicle Redaction
- △ License Plate Redaction
- △ Small Object Redaction

## Minimum System Requirements

Windows 7 or newer, 64 bit Intel i3 processor or higher  
4GB RAM, or 1GB per available processor core  
Screen resolution of 1280 x 768 or higher  
Recent version of Chrome, FireFox, Edge, or IE 10+ (users of Client/Server only)





**NSW**  
**02 9749 5888**  
*nsw@eos.com.au*

**VIC**  
**03 9544 5633**  
*vic@eos.com.au*

**QLD**  
**07 3252 9272**  
*qld@eos.com.au*

**WA**  
**08 9249 5911**  
*wa@eos.com.au*

