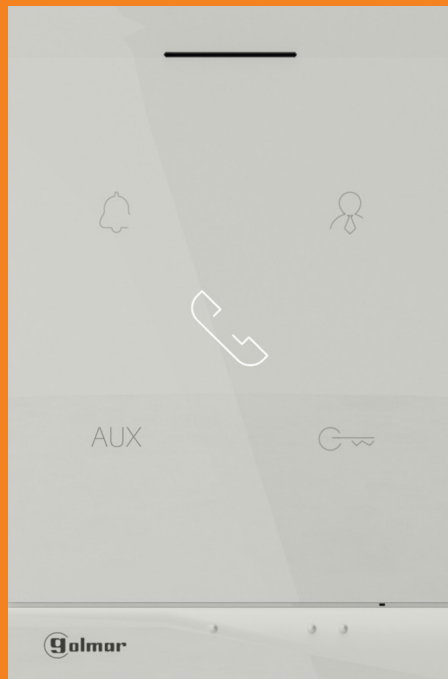




ART 1/G+



INSTALLER MANUAL

INDEX

1. Safety cautions and warnings.....	3
2. Specifications	3
3. Device description.....	3
3.1. Jumper description	4
4. Device installation.....	4
5. Module configuration through the Web Client.....	5
5.1. Settings	5
5.2. SIP Server	5
5.3. About	6

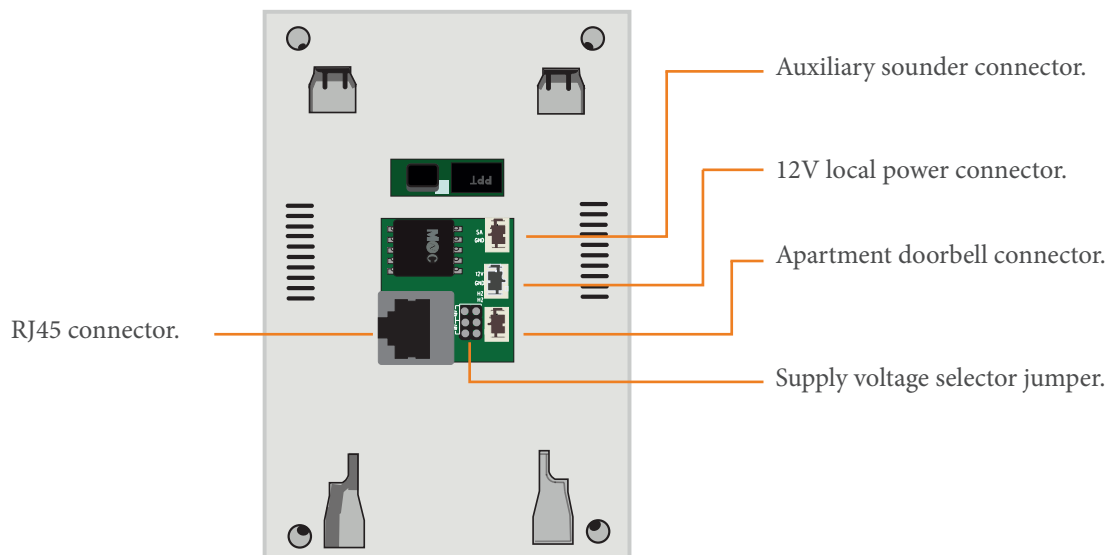
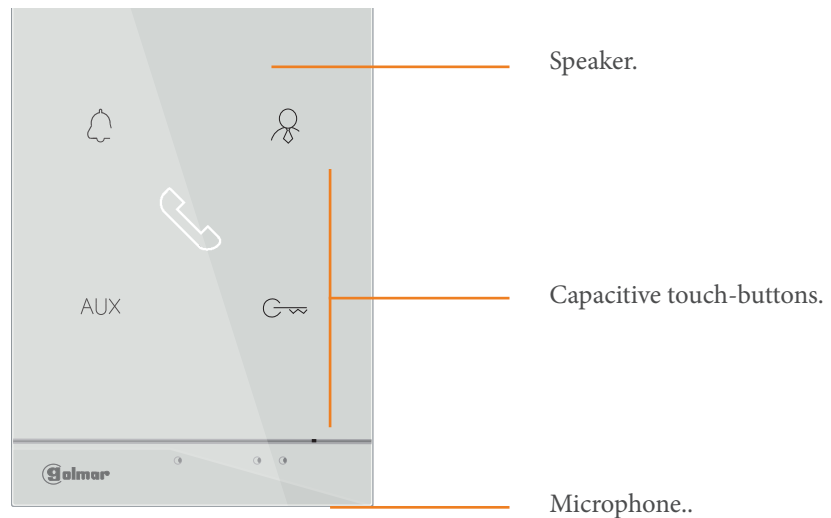
1. SAFETY CAUTIONS AND WARNINGS

- The installation and setup of this equipment must be done by an authorized installer.
- The current regulations oblige to protect the power supply by means of a thermal magnetic circuit breaker.
- All the installation conduits must distance at least 40 cm from any other installation.
- In regards of the power supply FA-G+:
 - Do not tight with excessive strength the screws of the terminal block at FA-G+ power supply.
 - Install the power supply in a dry and secure area, protected against water drops.
 - Avoid placing the power supply close to heating sources, humid or dusty areas.
 - Do not cover the power supply ventilation openings area to assure air flow circulation.
 - To prevent damages, the power supply has to be strongly mounted. Use a DIN rail 46277 (8 DIN) to fix it.
 - To avoid an Electrical shock, do not remove the protection cover and do not manipulate the cables connected to the power terminals.

2. SPECIFICATIONS

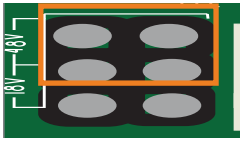
- TCP/IP video intercom system with technology IP-G+.
- Installation over existing ethernet network (D4L-G+/POE are required).
- Up to 98 blocks in one system.
- Up to 19 entry panels at each block.
- Up to 19 general panels at each installation.
- Up to 799 flats per each block.
- Up to 19 guard units for the general compound and 9 guard units at each block.
- Up to 32 ONVIF cameras.

3. DEEVICE DESCRIPTION

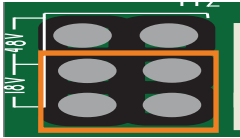


3.1. Jumper description

The jumper allows to select which voltage amplitude supplies the device as is not the same voltage when the apartment unit is connected to an output of a D4L-PoE/G+ switch as it is when connecting it to a switch providing 48V standard PoE.



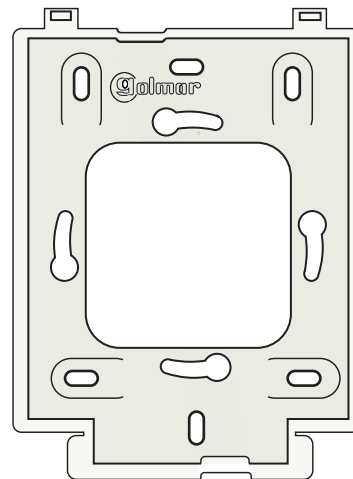
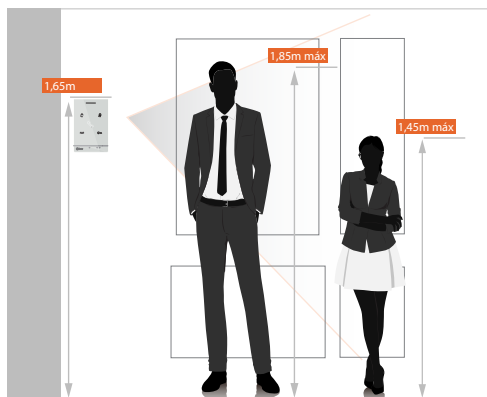
- Position 48V (default).
The device is ready to receive 48V standard PoE.



- Position 18V.
The device is ready to receive 18V from a D4L-PoE/G+ or from a DCS-G+.

4. DEVICE INSTALLATION

For the device installation, first we must place the mount in a flat surface and at the most convenient height for correct handling. At a height of 1,65m would be the optimal choice for anyone to maintain an adequate distance between the microphone and their face when speaking.



Mount of the hands-free audio unit.

Necessary elements to complete an installation:

- FA-G+ power supply for each 8 devices (door panels, monitors...).
 - Distribute the different devices through D4L-G+/PoE distributors of 4 distributed outputs.
 - Choose the 6502/G+ coded panel, or a modular composition of the Nexa panel with the El632/G+ audio and video module to be able to register the devices..
 - Choose ART 7/G+ video units, or ART 7W/G+ units with integrated WiFi to receive calls via the G2CALL+ app (available for Android and IOS).
 - Add ART 7/G+/PCM and ART 7W/G+/PCM video units if you want that the internal unit has a PCM/G+ private call module
- In case of daisy-chain distribution of devices (IN/OUT), use DCP/G+ injector with the FA-DC48/G+ power supply and DCS/G+ Ethernet switches in monitors.

5. MODULE CONFIGURATION THROUGH THE WEB CLIENT

To do the device configuration, it will be necessary to connect to its web client as it is not possible to do it in the own device. We will connect with the browser to the device IP that will be the 10.0.0.254 as it has all the default factory settings. It is essential that there is no other device connected to the network with factory default settings, as when sharing the same IP address would cause a conflict and we would not be able to access the device web client with our computer.

5.1. Settings

Dialing code length (5).

Block number (1-98).

Apartment address (1-799).



Unit number (1-6).

(**) Direct guard call address.

(***) Automatic answer.

(****) Press HZ to call the guard unit.

Manual entering of network parameters.

- (*) Address to which the device will call when the icon  is pressed.
- (**) With this mode enabled, when the hands-free audio unit receive a call it won't be necessary to press  icon to answer the call, this automatically enables the communication.
- (***) When this mode is activated, we will make a call to the address assigned in the "Guard" field when pressing the push-button connected to HZ.

5.2. SIP Server

In the "SIP Server" section we will be able to include the device in a PABX telephone switchboard to receive calls through an extension which we previously assigned to the device in the switchboard. We must select the server of the list on the left-hand of the screen and fill the requested parameters as follows:

Enable/Disable the SIP server.

SIP server name.

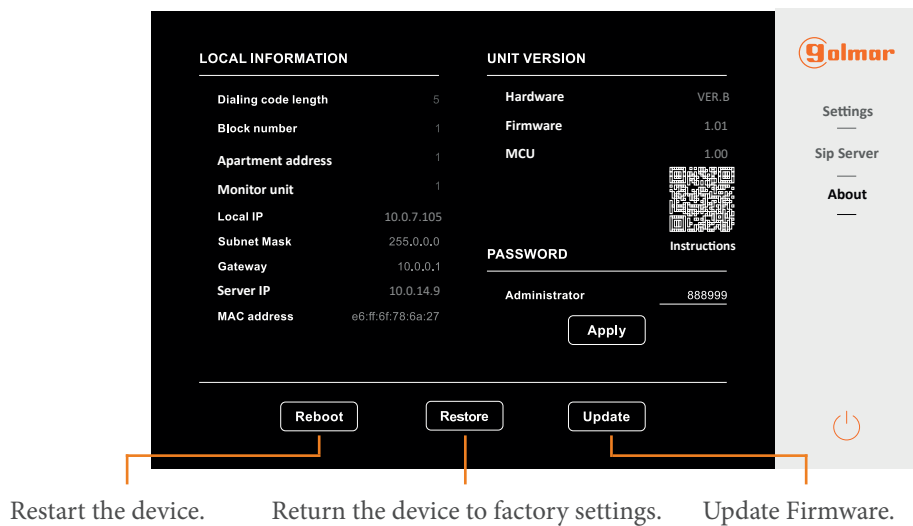
Switchboard IP address.

Transmission port. The most frequent is the 5060.

Extension and password created for the device.

5.3. About

In the “About” section we will find the information of the device configuration as well as firmware and hardware versions. We also find a QR link wich forward us to the product websit where we will find in the “Downloads” section all the product manuals. We will be able to reboot the device, update its FW version and restore the device to factory default settings.





C/ Silici 13. Poligon Industrial Famadas
08940 – Cornellà del Llobregat – Spain
golmar@golmar.es
Telf: +34 934 800 696
www.golmar.es